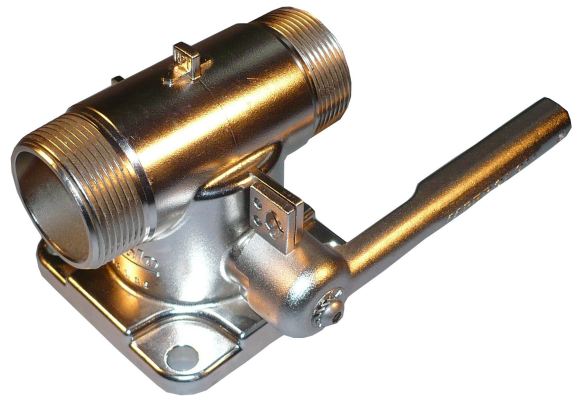


# 1 1/2" ATCO™ Dual Airline

Series AT4X Air inlet ball valve

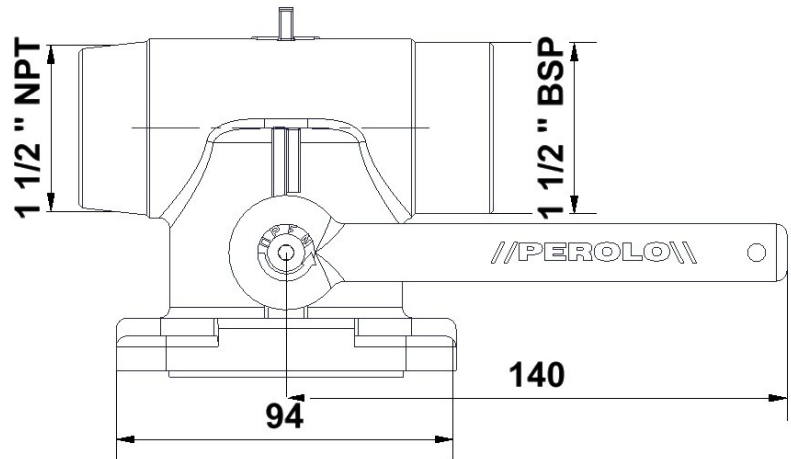
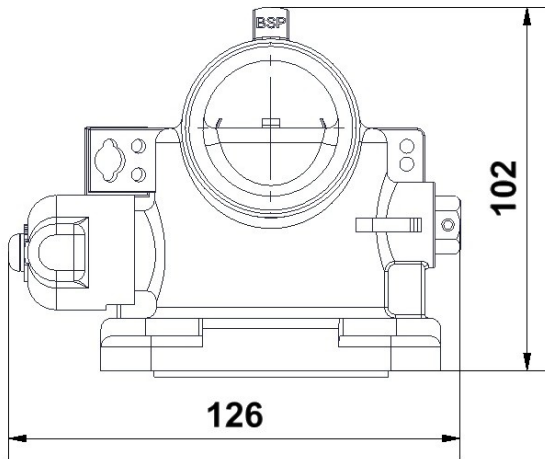
The Perolo 1 1/2" ATCO™ dual ball valve is designed to be used as an air inlet or as a fluid inlet/outlet valve.

Made of 316/1,4401 stainless steel, the 1 1/2" ATCO™ ball valve is applicable to tank containers, IBC's, rail tank cars, road tankers and static tanks dedicated to transporting or storing chemical and food grade fluids.



Air Inlet

## Specifications



- Nominal diameter: 1 1/2 "
- Weight : 2,3kg
- MAWP : 6 bar
- Test pressure 9 bar
- Drilling : 4x Ø 10.5 on a Ø 103,5 PCD
- Working temperature : -40°C/ +150°C

## Features

- 316 / 1.4401 stainless steel construction
- Compact design
- 1/4 turn handling operation
- PTFE seals

## Conformity & certifications

- Complying with ADR & IMDG  
BDX 09 1981774/04/Fr  
Approved by Bureau Veritas

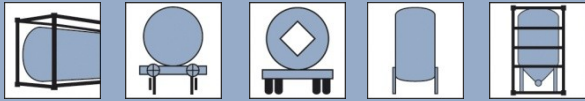
## Options

- Cap & chain
- Filter
- Gauge protection
- 1/4" BSP or 1/4" NPT gauge connection



## Accessories

- Pressure gauge. Part # 70 18 06 00 95.
- Remote control. Part # 11 14 04 00 00.
- Remote ctrl handle Part # 12 96 07 16 00.
- 1 1/2" BSP Cap Part # 11 14 01 30 00.
- 1 1/2" NPT Cap Part # 12 96 03 00 00FF.
- 1 1/2" BSP + 1 1/2" Caps Part # 12 96 08 10 00.



## Codification

1. Base code of your 1 ½ " ATCO™

AT4X6T    2    ?    ?    2    ?

2. Inlet flange drilling

- 4x Ø 11 on a Ø 103,5 PCD

2 → [ ]

3. Cap

- With BSP & NPT Caps  
- Without cap

3C  
3 } → [ ]

4. Filter

- With  
- Without

P  
S } → [ ]

5. Gauge connection

- ¼ " BSP connection  
- ¼ " NPT connection  
- without connection

2  
1  
0 } → [ ]

6. Gauge protection

- Without  
- With

1  
2 } → [ ]

Final code of your 1 ½ " ATCO™

AT4X6T    2    ?    ?    ?    ?

**STANDARD PART#**

AT4X6T    2    3C    S    2    1