

1 1/2" ATCO™ Airline Ball Valve

Series AD3X Air inlet ball valve

The NEW Perolo 1 1/2" ATCO™ ball valve is designed to be used as an air inlet or as a fluid inlet/outlet valve.

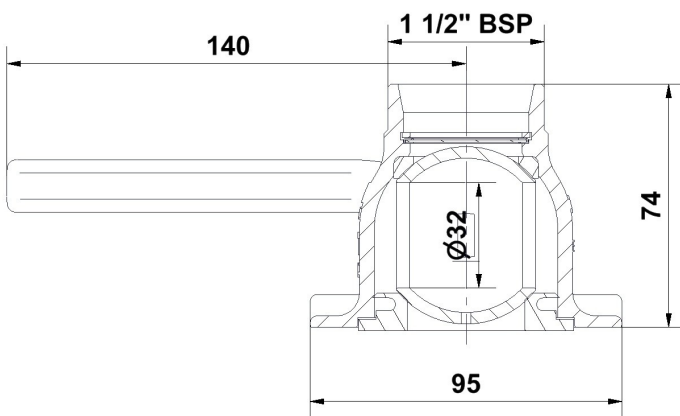
Made of 316/1.4401 stainless steel, the 1 1/2" ATCO™ ball valve is applicable to tank containers, IBC's, rail tank cars, road tankers and static tanks dedicated to transporting or storing chemical and food grade fluids.

With a super compact design, the NEW 1 1/2" ATCO™ is light & economic.



Air Inlet

Specifications



- Nominal diameter: 32mm
- Weight : 1,2kg
- MAWP : 7 bar
- Test pressure 10 bar
- Drilling : 4x Ø 11 on a Ø 103,5 PCD
- Working temperature : -40°C/ +150°C
- Design temperature : 190°C

Features

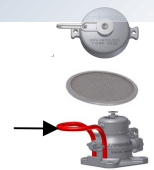
- 316/1.4401 stainless steel construction
- Super Compact design (face to face : 74mm)
- Easy filter change
- 1/4 turn handling operation
- PTFE seals
- 1/4 " BSP gauge connection

Conformity & certifications

- Comply with ADR / IMDG
- Approved by Bureau Veritas
- Comply with EN14432

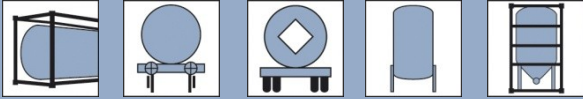
Options

- Cap & chain
- Filter
- Gauge protection



Accessories

- | | |
|----------------------|------------------------|
| • Weld in flange | Part # 11 90 20 00 00. |
| • Recess flange. | Part # 11 91 12 00 00. |
| • Screw kit. | Part # 70 18 06 00 95. |
| • Pressure gauge. | Part # 70 18 06 00 95. |
| • 1 1/2" BSP Cap | Part # 11 14 01 30 00. |
| • Remote ctrl handle | Part # 12 96 07 16 00. |
| • Remote control. | Part # 11 14 04 00 00. |



1½" ATCO™ Airline Ball Valve

Series AD3X Air inlet ball valve

Air Inlet

Codification

1. Base code of your 1 ½ " ATCO™

AD3X7T 2 ? ? 2 ?

2. Inlet flange drilling
- 4x Ø 11 on a Ø 103,5 PCD

2 → []

3. Cap
- With
- Without

1C
1] → []

4. Filter
- With
- Without

P
S] → []

5. Gauge connection
- ¼ " BSP connection

2 → []

6. Gauge protection
- Without
- With

1
2] → []

Final code of your 1 ½ " ATCO™

AD3X7T 2 ? ? 2 ?

STANDARD PART#

AD3X7T 2 1C S 2 1